



BRINGING CANCER CARE CLOSER TO HOME:

EXPANDING PET/CT IMAGING ACROSS BRITISH COLUMBIA

Expanding PET/CT Imaging Across British Columbia

Over the course of a lifetime, an individual has a 43% chance of hearing three life-altering words: “You have cancer.” Treatment is difficult for patients and families, and can be a source of anxiety and uncertainty. British Columbians deserve the best care, as close to home as possible.

PET/CT is proven as one of the most useful tools for obtaining a complete picture of a patient’s cancer, with an ability to detect cancer cells at an early stage – even before the cells start forming a mass or tumour. Its use has become standard practice across the entire spectrum of cancer care—from diagnosis to treatment planning, to evaluating the effectiveness of treatment and assessing if cancer has spread or returned.

In B.C., there are currently two publicly-funded PET/CT scanners, both located at the BC Cancer Agency Vancouver Centre. And while the province has been extremely efficient in the use of these two scanners, they are unable to meet current demand.

The BC Cancer Foundation, in partnership with the BC Cancer Agency and Province of British Columbia, has launched a \$5 million fundraising campaign to purchase and install a new state-of-the-art PET/CT scanner at the BC Cancer Agency Vancouver Island Centre in Victoria.

We invite you to join us in bringing PET/CT to Vancouver Island. Your generous support will contribute to the health and well-being of thousands of Vancouver Island residents and bring new hope to families affected by cancer.



Rising Demand for a Critical Tool

With increasing demand, the need for PET/CT technology on Vancouver Island has never been clearer. While operating hours for the two Vancouver scanners have increased in recent years, this added capacity fails to address the issue of accessibility for patients living outside the Lower Mainland. In 2014, 1,270 scans were performed for patients in the Island Health region. This represents a 147% increase in the number of scans performed compared to just five years previous.

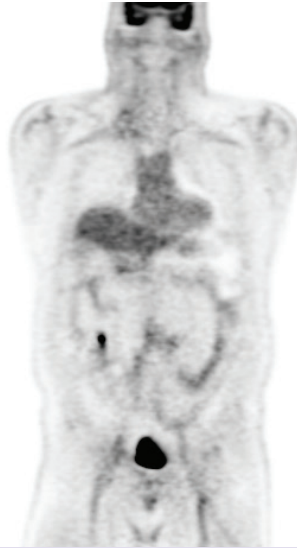
Travel comes at a cost—both physically and financially. For some patients with frail health, doctors must weigh the burden of travel with the benefit of the PET/CT scan. In some cases, where the challenge of travel is too great, PET/CT isn't a viable option. A new scanner in Victoria would mean fewer oncologists and patients having to make difficult decisions about care, and greater access to this critical service.

PET/CT: Precision Technology, Accurate Diagnosis

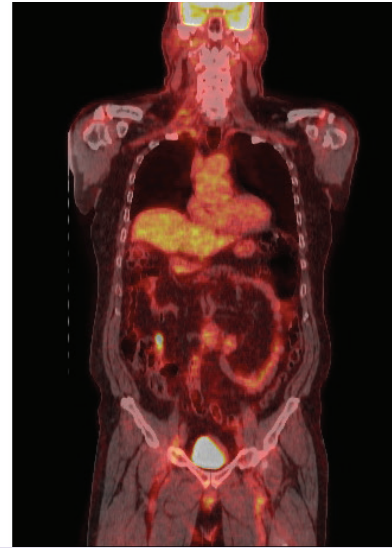
PET/CT gives doctors crucial diagnostic and treatment information that can prevent patients from undergoing unnecessary radiation treatment, surgery, additional imaging tests and biopsies.



CT shows no anatomic abnormality



PET shows abnormal uptake in the colon



Fused PET/CT shows exactly where the abnormality is located

In this example, a 67-year-old male went for a routine physical, and was found to have an enlarged lymph node in his neck. An ultrasound and biopsy were performed, and cancer was found, thought to be originating from his throat.

Since nothing else was seen on physical exam or staging CT scan, a PET/CT was ordered to look for the primary site of malignancy.

On the PET/CT, a focus of increased metabolism was seen in the right side of the large bowel, and as a result, a colonoscopy and biopsy were performed revealing early colon cancer.

This was not visible on the staging CT, and may have been too small to see on a screening colonoscopy without knowing where to look. The PET/CT found an early colon cancer before it had spread, allowing curative treatment to be undertaken.

Your Investment is Key to Better Outcomes

The generosity of our donors enables British Columbians to receive the best cancer care in the world. As we strive for a world free from cancer, now is the time to bring leading-edge PET/CT technology to Vancouver Island. With your investment, we will dramatically impact the lives of cancer patients. We invite you to join us as a partner in research and care.

About the BC Cancer Foundation

The BC Cancer Foundation is the bridge that connects philanthropic support and research breakthroughs in cancer knowledge. As the fundraising partner of the BC Cancer Agency and the largest charitable funder of cancer research in this province, we enable donors to make contributions to leading-edge research and technology that has a direct impact on improvements to cancer care for patients in British Columbia. We fund with the goal of finding solutions. As an independent charitable organization, we raise funds exclusively for the BC Cancer Agency that support innovative cancer research and compassionate enhancements to patient care.

Alyssa Grace
Senior Director, Development
BC Cancer Foundation
250.519.5554
alyssa.grace@bccancer.bc.ca

Cynthia Durand-Smith
Senior Development Officer, Regional Major Gifts
BC Cancer Foundation
250.519.5747
cynthia.durand-smith@bccancer.bc.ca